

ABOLISH NORFOLK SOUTHERN RAILROAD CAMP CARS NOW

High Security Prison



Photo of a typical cell at Supermax
Living quarters for 1 prisoner.
(84 sq feet per person)
1 person per room—Indoor toilet

NS Camp Car

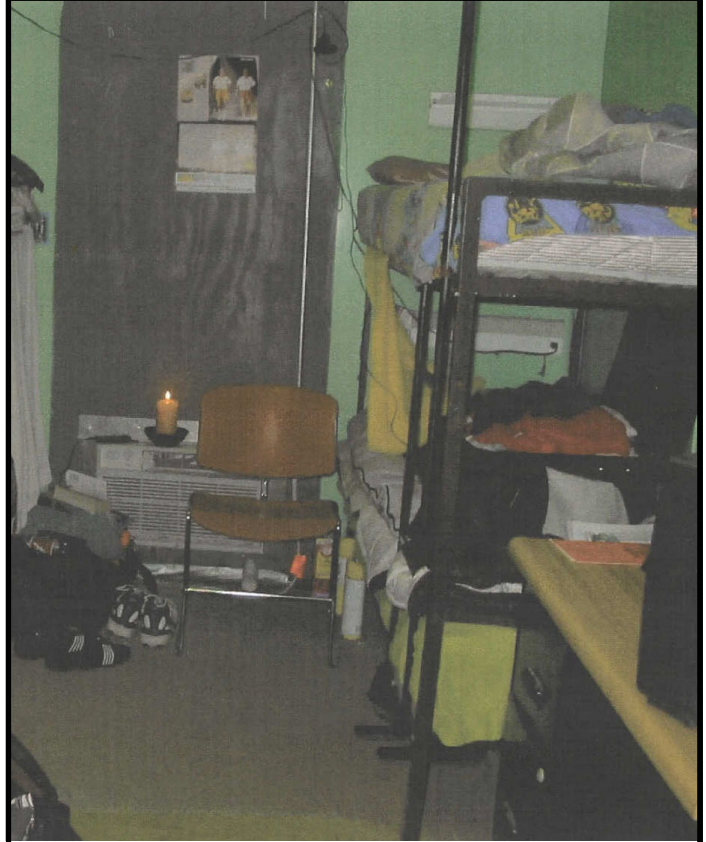


Photo of a typical Norfolk Southern Camp Car
Living quarters for 8 workers.
(50 sq ft per person)
8 people per room—Outdoor toilet

The life of a railroader on the maintenance of way road crew is a brutal one. The labor is grueling and physically demanding. The work is outdoors and the workers toil in all forms of weather, be it rain, snow, excessive heat or cold. At the end of the day, the grime is deeply imbedded and the workers are exhausted.

At the end of an draining and punishing day, the Norfolk Southern workers return to not a clean, warm hotel room, as do their counterparts on other Class 1 rail carriers but to camp cars that are small, cramped facilities that hold up to eight grown men. The men sleep in small bunk beds, smaller than a twin sized mattress— much like one would find today in a summer camp for children—four on each end of the camp car, with sinks and showers in the middle. The water in the camp cars is non-potable, meaning it is not fit for drinking, but it is the only water available for brushing their teeth, washing their face and showering.

ABOLISH NS CAMP CARS NOW!

Even at their best, NS camp cars are an inhumane way for an American worker to live.

The camp cars provide eight grown men with living space of 50 square feet each and an outdoor toilet – less than the maximum security prison cell where each inmate has 84 square feet of living space and an indoor toilet. BMW workers living in NS camp cars have to walk outside, through the elements – whether it be rain, snow, sleet, or hail - to a stinking outhouse.

Their beds are small – measuring 2' 6" x 6', meaning if a worker wants to roll over, they have to roll over in place, like a stuck pig in a rotisserie, and if they are over 6 feet, they have to sleep with their knees bent or their feet hanging over the edge of the bed.

The camp cars provide eight grown men with living space of 50 square feet each and an outdoor toilet – less than the maximum security prison cell where each inmate has 84 square feet of living space and an indoor toilet.

Going back to the camp cars after a grueling days work, a worker has to compete with seven other workers for shower time, eat in a dining car and then attempt to get a restful nights sleep for their aching bones in a crowded camp car with seven other workers, next to an operating train track where mile-long freight trains roar by throughout the night, sounding their horns at crossings and shaking the camp cars as they pass. It makes for fitful nights rest.

BMW workers living in NS camp cars have to walk outside, through the elements – whether it be rain, snow, sleet, or hail - to a stinking outhouse.

For Norfolk Southern management, these camp cars are a means of controlling their workforce and keeping it where they need it, when they need it – not unlike the plantations in the days of slavery.

Even at their best, camp cars are an inhumane way for an American worker to live. Even in the best of conditions, there is no way the camp cars crammed with eight workers can provide the privacy or the cleanliness for humane living conditions. The BMW worker lives in same grimy, filthy bed sheets week after week, steps into the same dirty shower day after day; trudges through mud soaked with gray water to an outhouse every night and every morning. With eight men living in such cramped quarters, the camp cars are virtually impossible to keep clean.

In a hotel, these workers will sleep in clean sheets every night, have their own room, toilet and shower, cleaned every day, and will have a decent amount of privacy. Norfolk Southern must be compelled to abandon these camp cars and begin boarding their workers in decent hotels like every other railroad in the country. Norfolk Southern must not be allowed to continue to force their workers to live in substandard living conditions.



**ABOLISH
NORFOLK SOUTHERN
CAMP CARS NOW !**

